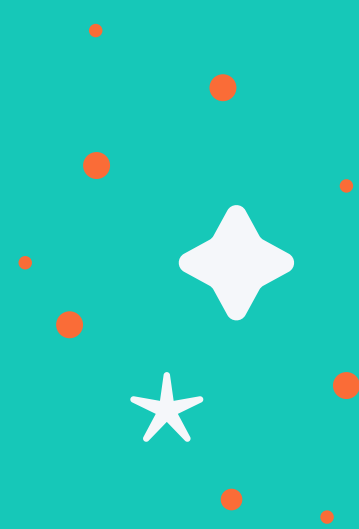




VIATEC



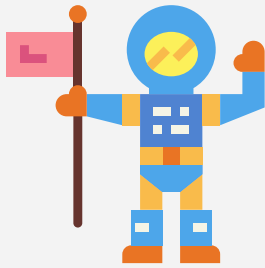
COVID-19

Workplace Guidelines

A SUMMARY

AS OF NOVEMBER 19, 2020





On November 19, 2020 at 3pm Dr. Bonnie Henry, our favourite Provincial Health Officer (PHO) announced new requirements for British Columbia in an effort to slow the spread of COVID-19.

This summary document is designed to help VIATEC members quickly and easily understand what is expected of them and their employees.

[Click to view original source: Province-wide restrictions.](#)

DISCLAIMER - LEGAL STATEMENT

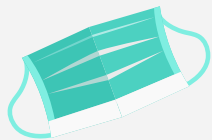
Please be advised that some or all of the information contained in this document may not be applicable to all businesses or places of work. It is intended for office environments.

Given the fluidity of this situation, we strongly recommend that you stay up to date with [WorkSafeBC](#) & [Provincial](#) instruction.

VIATEC bears no responsibility for any circumstances arising out of or related to the adoption, or decision not to adopt, any of the practices or procedures contained in this document.


MASKS AT WORKPLACES

Masks are required in all workplaces for shared work areas and areas where physical distancing cannot be maintained.



This includes:

- Elevators
- Kitchens
- Hallways



So long as you are physically distanced by a minimum of 2 metres from your colleagues, you do not have to wear a mask at your desk.

YOUR COVID-19 SAFETY PLAN

You must have one! Employers must review and redouble their efforts on their COVID-19 Safety Plan, remind employees to monitor themselves daily and to always stay home if they have symptoms.

If you need help creating one, we've created a template in our Back to the Office Handbook available on our [COVID-19 VIATEC Member Resources website page](#).



WORKING FROM HOME



Employers must make every effort to provide work from home options.

Workplaces must ensure that all workers and customers maintain appropriate physical distance and extra care should be taken in small office spaces, break rooms and kitchens.

WORKPLACE ENFORCEMENT

In addition to compliance activities by WorkSafe, an Environmental Health Officers team will focus on workplaces in the Vancouver Coastal and Fraser Health regions to ensure COVID-19 Safety Plan compliance and enable rapid response and action.

[Click here to review the WorkSafeBC COVID-19 Safety Plan documentation.](#)

COMMUTING & TRAVEL

At this time, all non-essential travel should be avoided. This includes travel into and out of B.C. and between regions of the province.

For example:

- Do not travel for a vacation
- Do not travel to visit friends or family outside of your household or core bubble



WHAT IS ESSENTIAL TRAVEL?

Individual circumstances may affect whether a particular trip is considered essential or non-essential.

Essential travel within B.C. includes:

- Regular travel for work within your region
 - Travel for things like medical appointment and hospital visits
- For example, if you live in Langford and work in Victoria you can continue to commute

If you need to travel for essential reasons, take the same health and safety precautions you do at home:

- Wash your hands often
- Practice safe distancing, 2 m
- Travel only with yourself, household or pandemic bubble
- Stick to the outdoors whenever possible
- Clean spaces often

COMING FROM OUTSIDE B.C.

At this time, people travelling to B.C. from another province or territory within Canada should only come for essential reasons. If you do travel, you are expected to follow the same travel guidelines as everyone else in B.C.

- The restriction of all non-essential travel at the Canada-U.S. border remains in effect
- Travellers to and from the United States going to and from Alaska must proceed directly to their destination and self-isolate during any necessary overnight stops
- International travellers returning to B.C. are required by law to self-quarantine for 14 days and complete the federal ArriveCAN application

Flights to and from B.C.

The order does not restrict flights entering and leaving B.C. [Click here to see complete travel restrictions, exemptions and advice here.](#)





VIATEC

Find a mistake?

Something missing?

Got a better link or resource we should include?

This document was put together fast with the best info we could find and we plan to release updates as we learn more from policy-makers, regulators and our Members' front line experience so please send us your suggestion to: pparker@viatec.ca